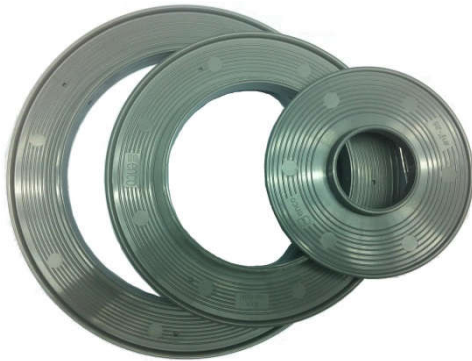


# PVC PUDDLE FLANGE



**Our Puddle Flanges act as a barrier for water when pipes pass through retaining walls of cast-in structures.**

## Introduction

PVC Puddle Flanges are to be welded on pipes going through concrete structures. The pipes passing through concrete usually do not bond well to the concrete, and thus, water can run on the external surface of the pipe. Our product features uniquely designed ridges on the surface of the flange that can act as a barrier and prevent leakages effectively.

Application examples: To be used in concrete structures such as tanks, manhole chambers, shafts, floor slabs and basements etc.

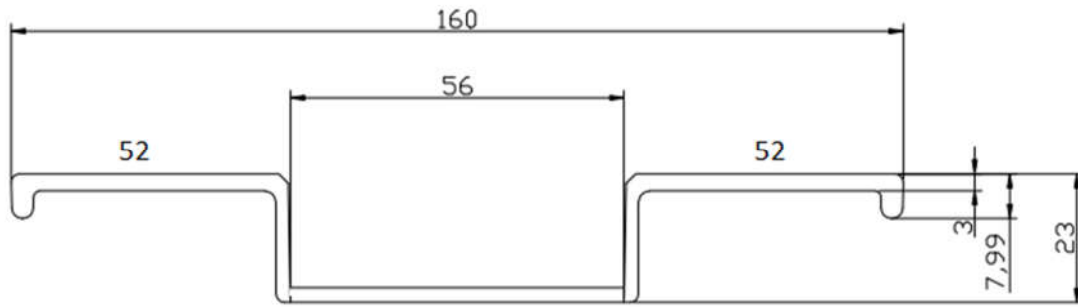
## Available Sizes:

- 1"
- 1-1/2"
- 2"
- 3"
- 4"
- 6" and more.

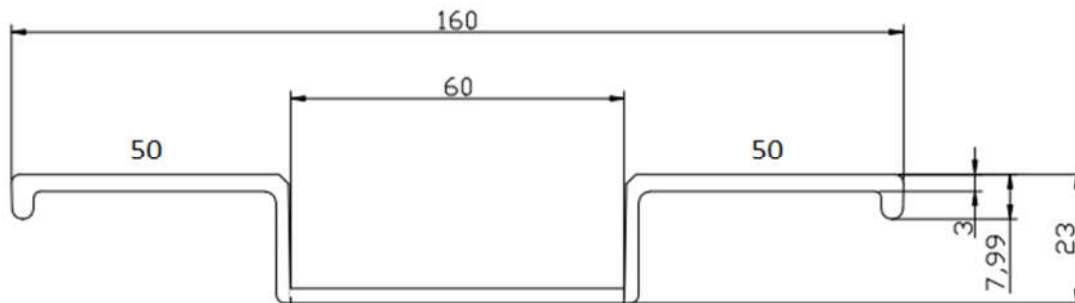
We can fabricate & supply PVC Puddle Flange Pipes based on your required pipe size, pipe class type and pipe length:



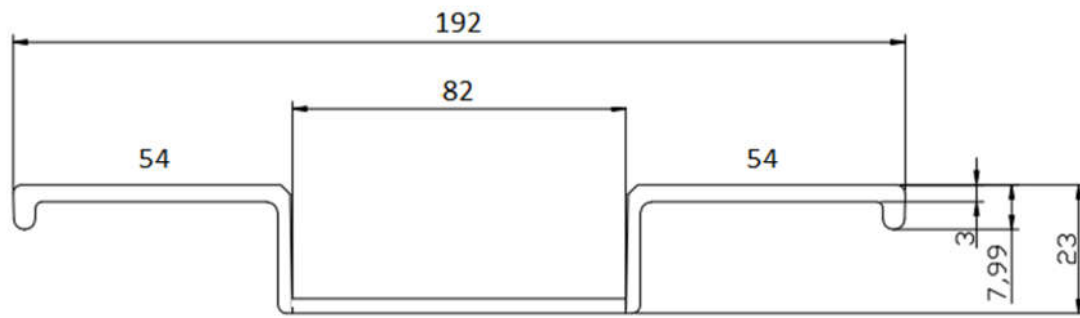
**PVC PUDDLE FLANGE - 2" (SS213)**



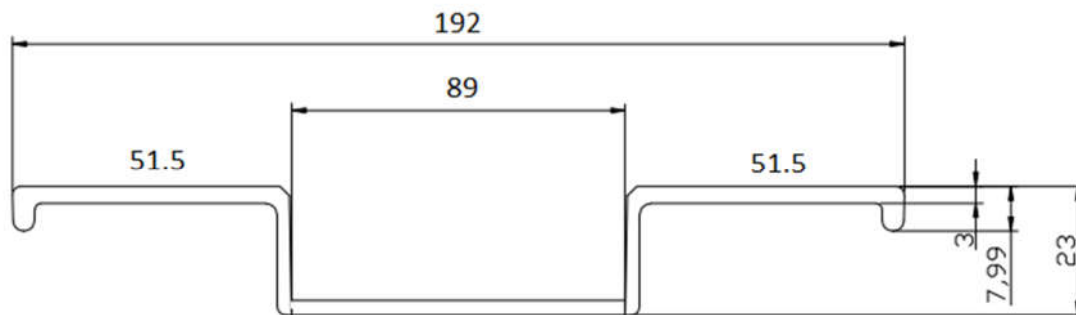
**PVC PUDDLE FLANGE - 2" (AE/AW, JIS)**



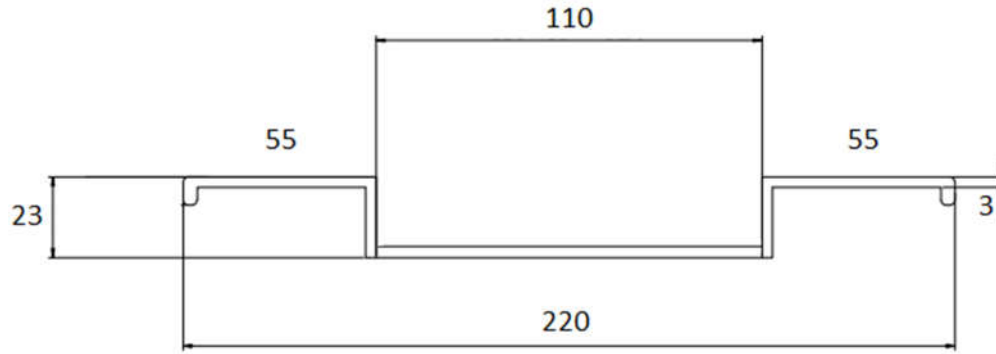
**PVC PUDDLE FLANGE - 3" (SS213)**



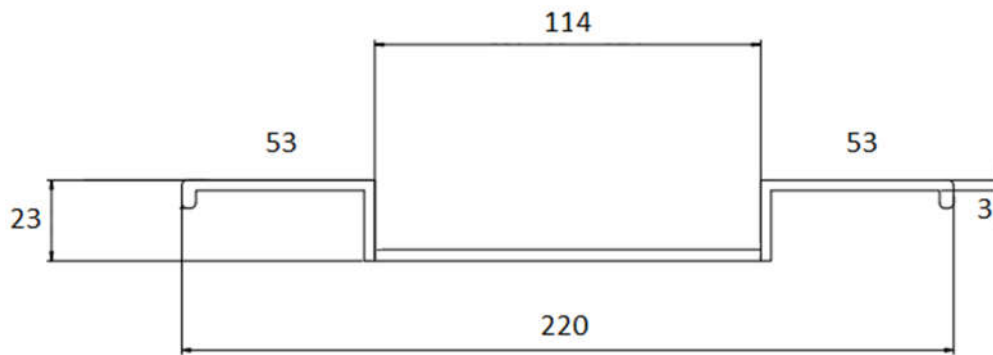
**PVC PUDDLE FLANGE - 3" (AE/AW, JIS)**



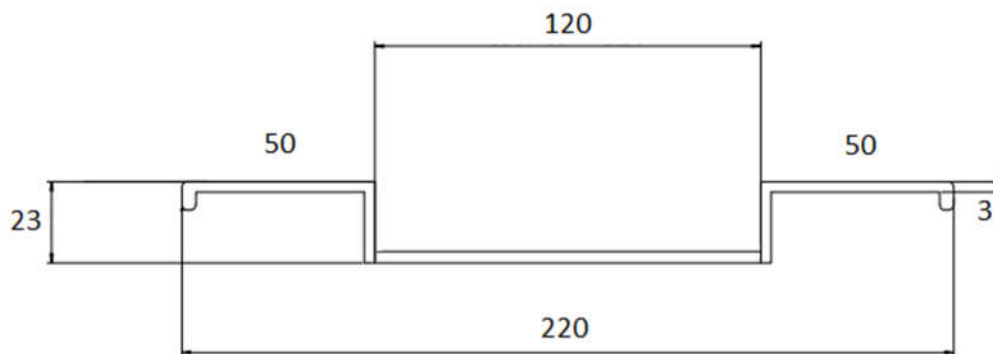
**PVC PUDDLE FLANGE - 4" (SS272)**



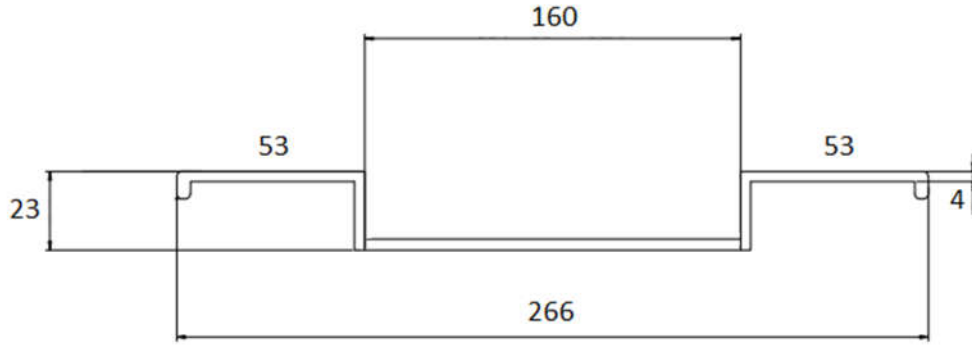
**PVC PUDDLE FLANGE - 4" (AE/AW, JIS)**



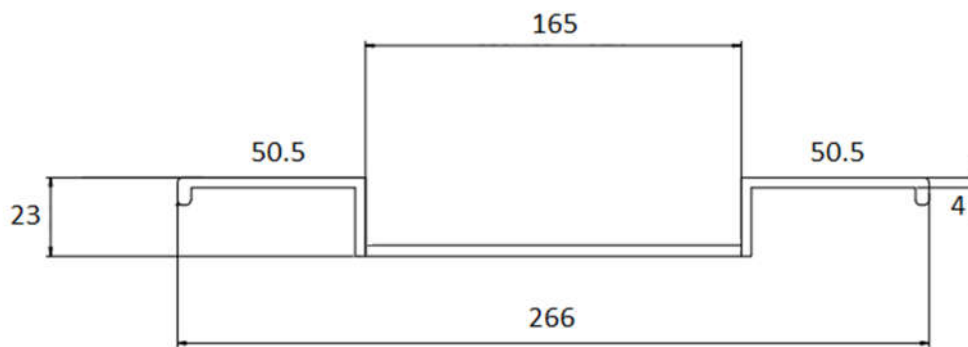
**PVC PUDDLE FLANGE - 4" (SS213 SOCKET)**



**PVC PUDDLE FLANGE - 6" (SS213)**



**PVC PUDDLE FLANGE - 6" (AE/AW, JIS)**



**PVC PUDDLE FLANGE - 6" (SS141)**

